

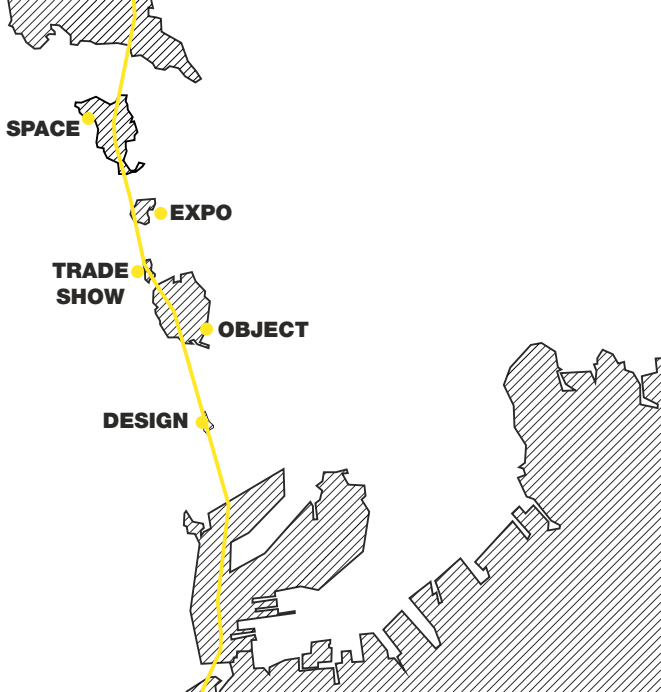
WE LOVE to SHOW YOUR QUALITY

seto
design



The Great Seto Bridge (瀬戸大橋, Seto Ōhashi)[1] is a series of double deck bridges connecting Okayama and Kagawa prefectures in Japan across a series of five small islands in the Seto Inland Sea. Built over the period 1978–88, it is one of the three routes of the Honshū–Shikoku Bridge Project connecting Honshū and Shikoku islands, and the only one with railroad connections included. At 13.1 kilometers (8.1 mi), it ranks as the world's longest two-tiered bridge system.

SETOTEAM Our projects are the result of passion for creating the exceptional and the unique. Individual approach to every project, a full commitment and constant search for the best solutions allow us to realize the most demanding visions. Our projects are distinguished by high quality and durability, this is confirmed by the opinion we have earned among our customers.





01

Commercial interior design



- Showrooms
- Interior design of public and commercial spaces
- 3D visualizations
- Development of technical specifications
- Book of standards for institutions
- Interior decoration
- Custom furniture design



02
POS

03
Booth







Aluprof

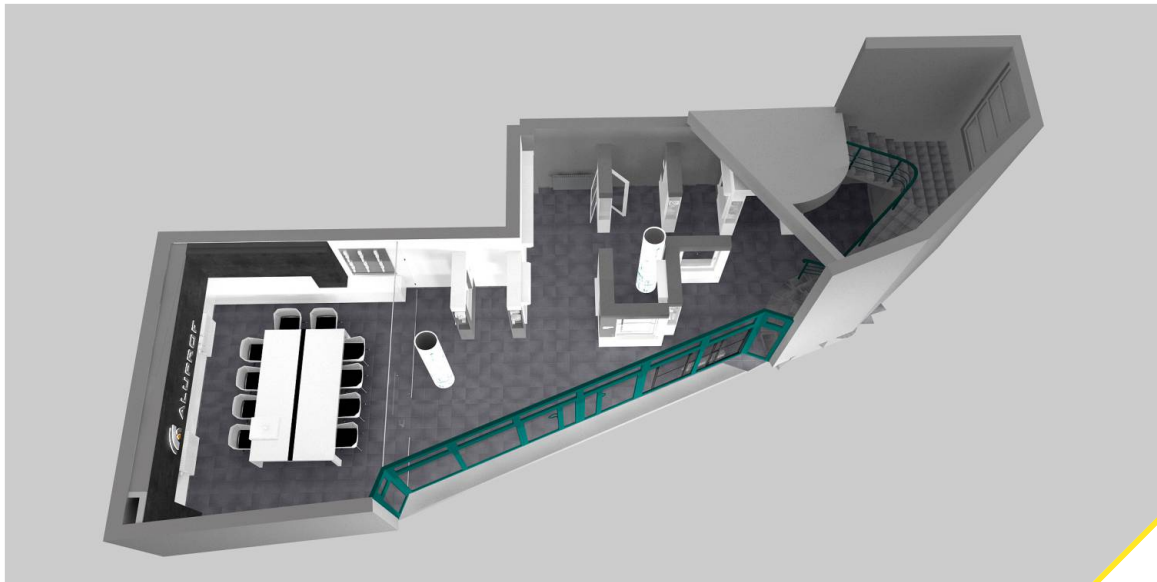
Showroom /design&realization/ 2018 Poland

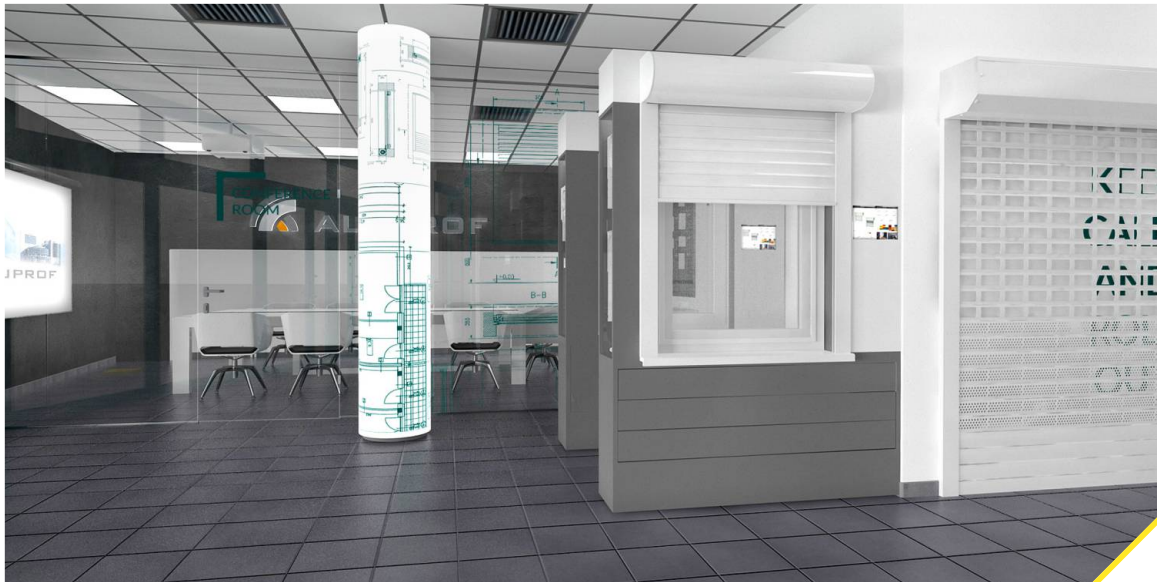


Aluprof

Showroom /design&realization/ 2018 Poland















LAUFEN

THE NEW CLASSIC

DESIGNER: STELLA ARNOFFI

© Laufen AG



LIVING SQUARE

DESIGNER: STELLA ARNOFFI

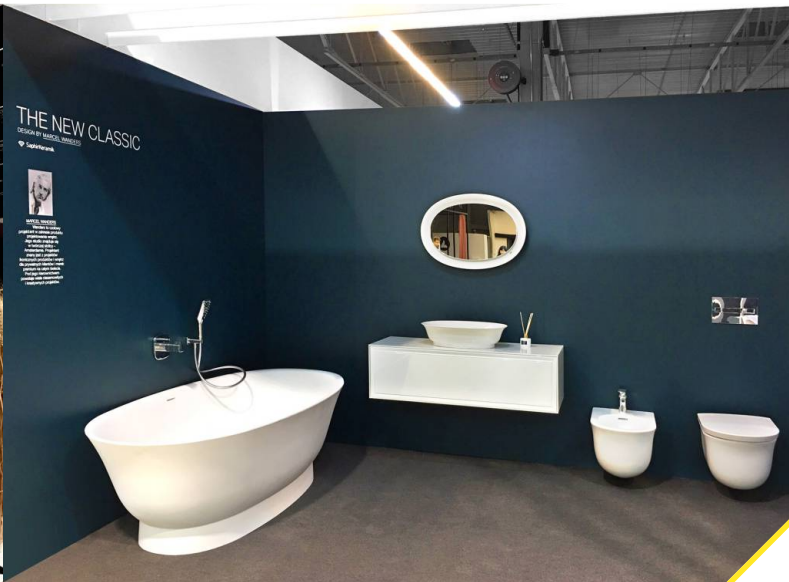
© Laufen AG

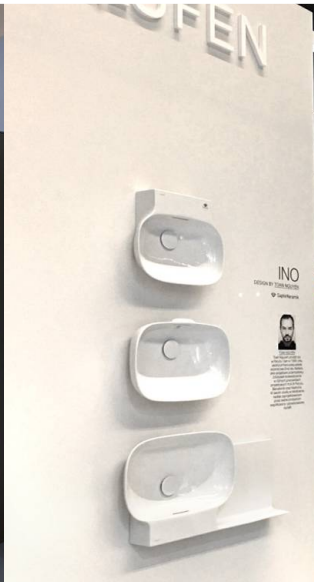
Kartell • LAUFEN

DESIGNER: STELLA ARNOFFI

© Laufen AG











Deante

Showroom /design/ 2019 Poland



Roca

Mobile Showroom /design&realization/ 2020 Poland



Roca

Mobile Showroom /design&realization/ 2020 Poland



Somfy

Mobile Showroom /design&realization/ 2020 Poland

01
Interior

















Lash Boom

Mobile Showroom /design&realization/ 2019 Germany




Lash Boom

Mobile Showroom /design&realization/ 2019 Germany



02

POS



- Store in Store
- Product and multimedia displays
- 3D visualizations
- Roll-ups
- Exhibition systems



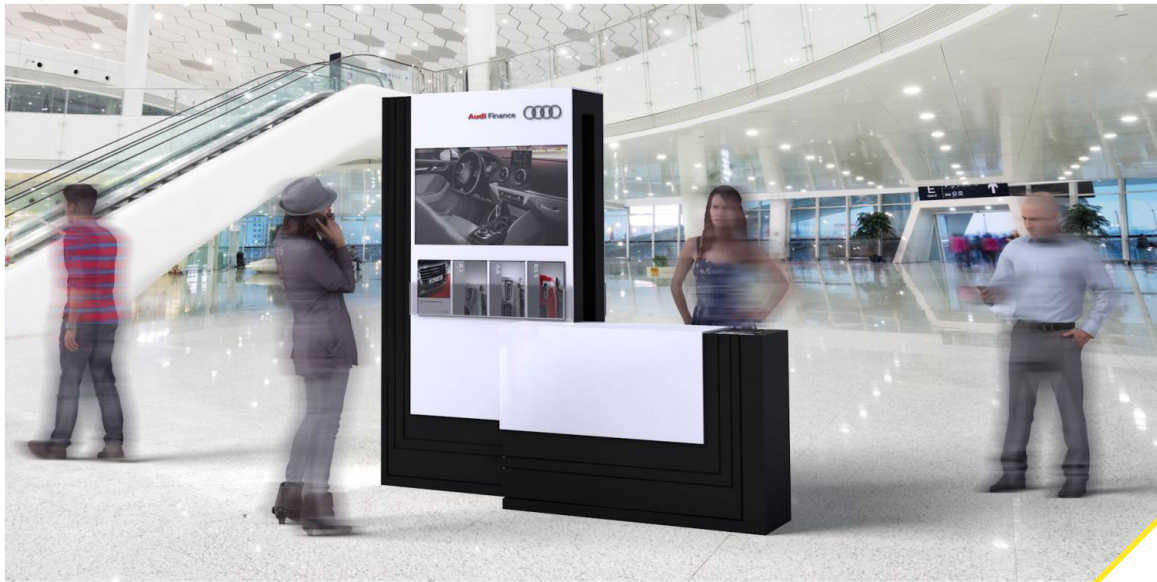








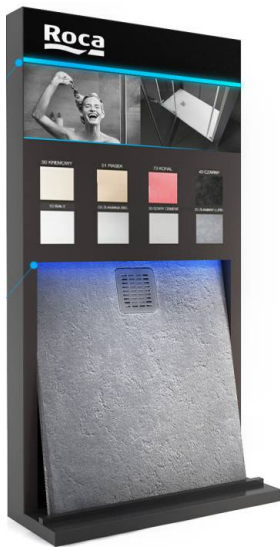














Roca

Display /design/ 2018 Poland



Roca

Display /design/ 2020 Poland



Roca

Display /design/ 2019 Poland










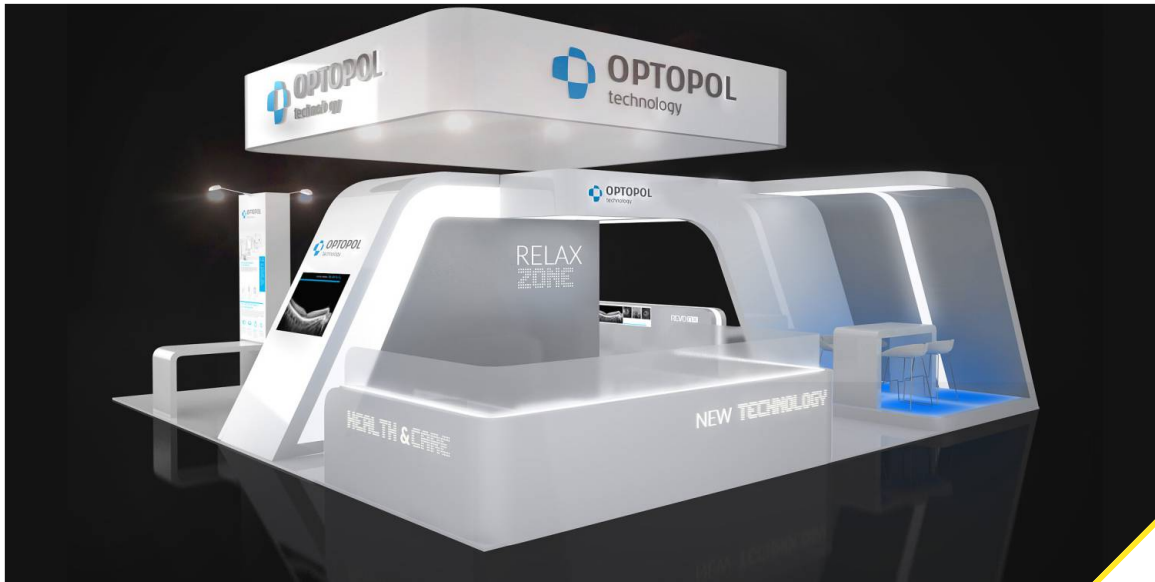


03

Booth



- Design and production of individual and systemic stands
- Event Support
- Multimedia support of conferences and events
- Technical and photo documentation
- Installation, technical supervision, transport, storage
- Additional services: catering, hostesses, decorations



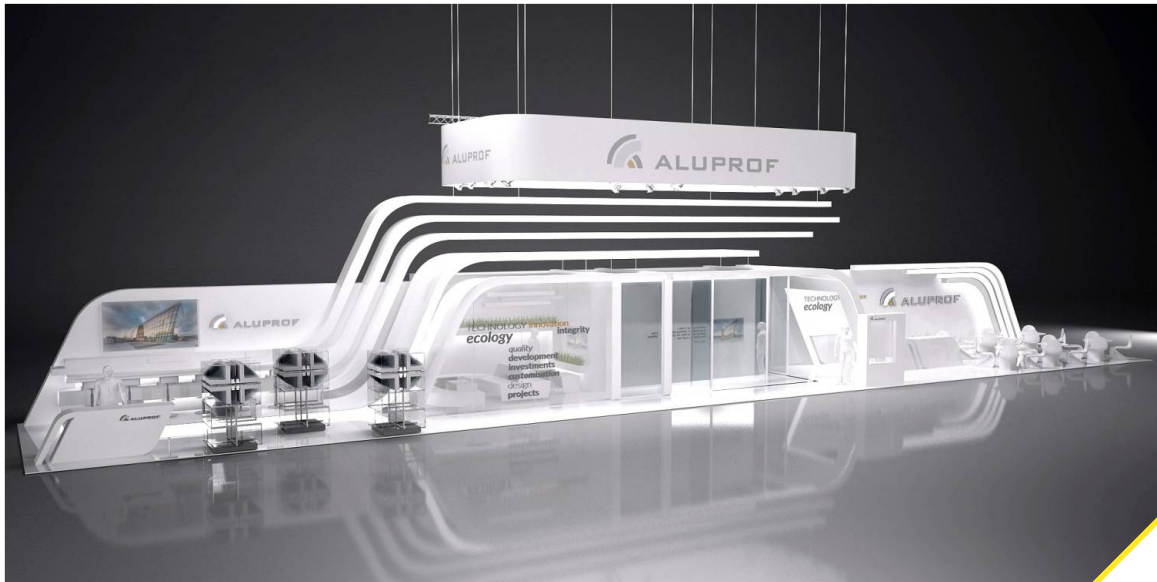






Cormay/Orphe

Booth /design/ 2018 Germany







ACANTHUS
AUREUS

**BUDMA
AWARD**

2018

Joniec

Booth /design/ 2018 Poland

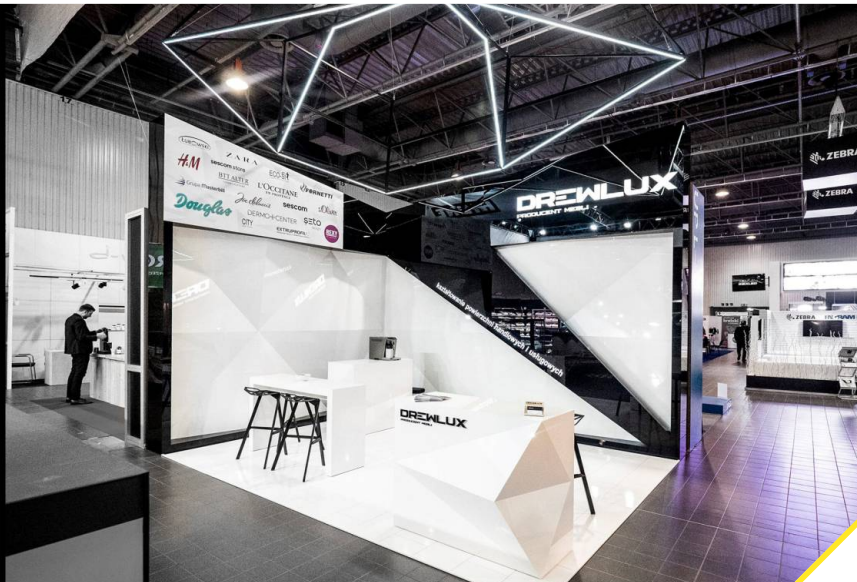
03
Booth







**55standOUT.
AWARD**
2018



Drewlux

Booth /design/ 2018 Poland



**55standOUT.
AWARD
2018**

Roca

Booth /design/ 2018 Poland

03
Booth









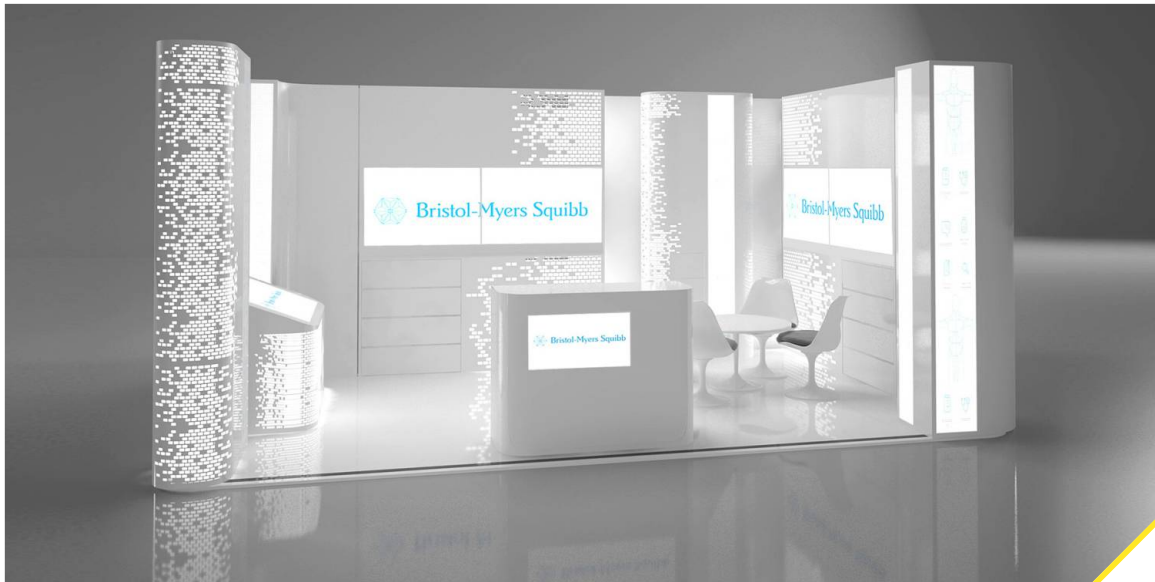
ACANTHUS
AUREUS
**POL-ECO
AWARD**
2018

standOUT.
**POL-ECO
AWARD**
2018

Eneris

Booth /design/ 2018 Poland

03
Booth







WE LOVE
OUR CLIENTS



WE LOVE to SHOW YOUR QUALITY

Seto Design sp. z o.o.
ul. Gęsia 8
31-535 Krakow
Poland



www.facebook.com/SetoDesignExpo/



www.instagram.com/seto_design/



www.behance.net/setodesign/



www.setodesign.pl

SETO TEAM

office@setodesign.pl

Fairs & Events department

Konrad Polak
project manager

+48 696 701 208
k.polak@setodesign.pl

Design department

Justyna Podczasi
art. director/designer

+48 785 483 072
j.podczasi@setodesign.pl

WE LOVE to SHOW YOUR QUALITY